

Deluxe

Height Adjustable Trolley

Thank you for deciding to purchase the Deluxe Height Adjustable Trolley from CareCo.

The Trolley is manufactured from the finest materials and components available. When used correctly it is designed to give many years of reliable trouble-free service.

PRODUCT CODE **DL06108**

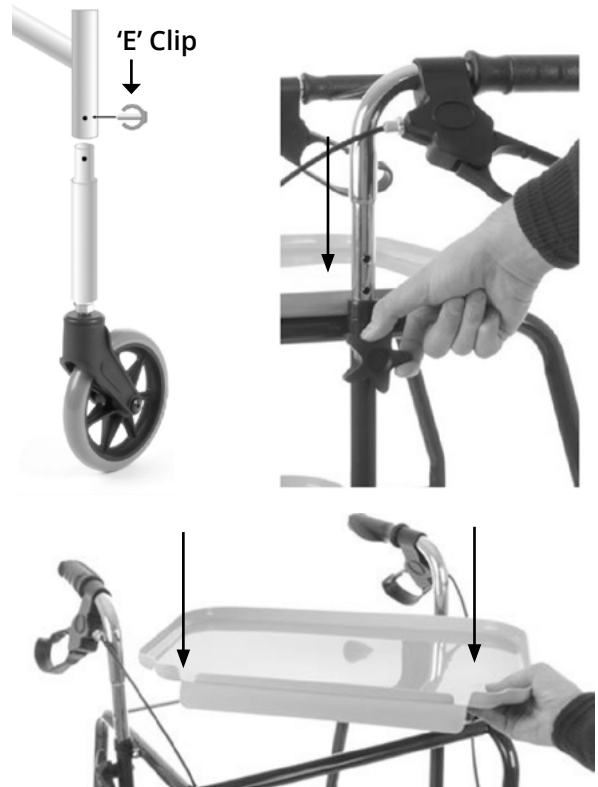
Parts Description

1. Handle
2. Hand Brake
3. Tray
4. Thumb Screw
5. Main Frame
6. "E" Clip
7. Leg
8. Brake
9. Castor



Assembly Instructions

1. Remove all components from the carton.
2. Insert wheel without brake cable into the front leg of the frame. Secure in place with "E" clip. Repeat for second leg.
3. Insert wheel with brake cable into the back leg of the frame. Secure in place with "E" clip. Repeat for second leg.
4. To install hand brakes, slide arm tube into frame. Align adjustment holes to the desired height and insert bolt (from inside out) and secure in place with rubber washer and thumb screw. Be sure hand brake and wheel are on the same side of the trolley as to not cross the brake cables.
5. Insert two trays on to the main frame. Slide the back of the tray onto the flat bar of the main frame then push down on the front of the tray. Repeat for the other tray.



Trolley Dimesions

Trolley WIDTH X DEPTH X HEIGHT	22.4" x 21.4" x 25.3"-37.2"	57cm x 54.5cm x 64.cm-94.5cm
Trays WIDTH X DEPTH	18.1" x 13.5"	46.2cm x 34.3cm
Weight	Total 17.6lb, Tray 1.3lb	Total 8kg, Tray 0.58kg

Using the Trolley

- The Deluxe Height Adjustable Trolley is ideal for carrying objects or for use as a temporary table to dine from or for writing or hobbies.
- The maximum weight limit for each tray is 33lb.
- Exceeding the maximum weight limit could result in damage or injury.
- Before use, check that all four wheels are on the ground and are set at equal heights.
- The Deluxe Height Adjustable Trolley has not been designed as a walking aid. Other specifically designed walking aids are available from CareCo.

Tray Removal & Cleaning

- The trays on the trolley can be removed for convenience or for cleaning. To remove, lift up the front of the tray then slide out the back of the trolley.
- The trays can be wiped down or washed with a mild detergent and damp cloth.

CareCo (UK) Limited, 1 Turing Court, Great Notley, Braintree, CM77 7AT | 0333 015 5000

CareCo

REF DL06108



CareCo (UK) Limited, 1 Turing Court,
Great Notley, Braintree, CM77 7AT

UDI



LOT

EC REP

SUNGO Europe B.V. Olympisch Stadion 24,
1076DE Amsterdam, Netherlands

MD

UKRP

SUNGO Certification Company Limited, 3rd
floor, 70 Gracechurch Street, London, EC3V 0HR