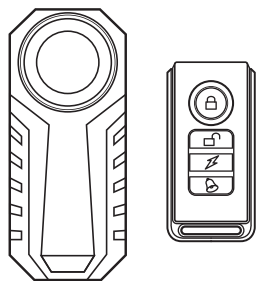


CareCo

MS08090002

Mobility Scooter Alarm



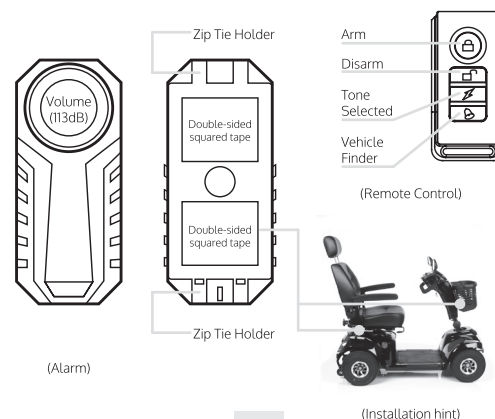
www.careco.co.uk CareCo (UK) Limited, 1 Turing Court, Great Notley, Braintree, CM77 7AT, England

Triaxial Accelerometer Sensor, 7 Stages Sensitivity for adjustment
SOS Emergency Help Function, 6 Tones Loud Siren Sound Selectable
3*AAA Batteries for Power Supply, Life lasts for 6-10 months

Waterproof: IP55
Range: 40-80M
Volume: 113dB
Operating Temperature: -20~60°C
Operating Humidity: < 80%
Storage Conditions: -30~70°C

1

1. Structure

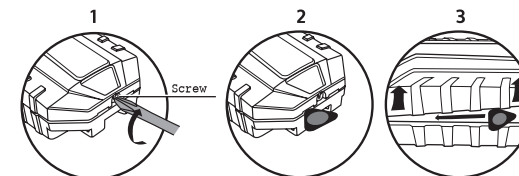


2

2. Instructions

2.1 Method of loading & replacing batteries

2.1.1 Normally batteries are loaded after production. Occasionally, do as the below figure. Remove the screw from the bottom, and then load 3 pieces of AAA alkaline batteries. It is succeed if the alarm sounds 3 beeps. Unload the batteries if won't use the alarm for long time.



Remove the screw from the bottom, use triangle slice to apart the plate from cover from the bottom or sides.

3

size:75x75mm

2.2 Usages and Settings

2.2.1 ARM & DISARM Mode Setting

2.2.1.1 Press [] button on remote once, the alarm will sound "Do..Le..Mi", then a beep after 5s, it becomes ARM alert state. If any vibration or movement detected, the alarm will sound a warning beep for 2s in a certain tone, if triggering the alarm again within 2-12s, it will alarm for 30s in 6 ringtones automatically.

2.2.1.2 To stop the alarm or exit ARM mode, press [] button on remote once, it will sound "Mi..Le..Do".

2.2.2 Sensitivity Adjustment

2.2.2.1 7 stages from Do Le Mi Fa So La Si, default sensitivity is Do (highest). Adjustment way: press and hold [] button, alarm will sound "Me..Le..Do" for 2 or 3 times, when LED indicator goes off and display for a long pause then be bright, loosen your finger then press [] button once, it will sound Do Le Mi Fa So La Si, then press [] button again once, you will hear "Do", press again, "Le" etc.. from highest to lowest, then sound in circulation. Once any sensitivity you need, just stop and press [] button to exit the setting.

4

2.2.3 Select Tones

Press [] button to select tone, 6 tones in all (Invalid for ARM Mode)

2.2.4 Vehicle Finder function:

press [] button, it will sound certain tone. you can set different tones by [] button, vehicle finder tone is the same tone once you set by [] button

2.2.5 Program remote

2.2.5.1 Program the first remote: unload the batteries, then load them after around 30s, press and hold [], then you will hear a beep, press [] button, 2 beeps, it succeeds.

2.2.5.2 Program one more remote: press [] button on paired remote once, then long press [] button, when LED indicator goes off and display for a long pause then be bright, after a beep, press [] button on new remote you want to add, if 2 beeps, the new remote can be used freely.

5

2.2.5.3 Erase all remotes: Be caution for this operation. Keep the alarm in disarm mode, long press [] button on paired remote, when LED indicator goes off and display for a long pause then be bright, after a beep, press [] button, 3 beeps will erase all paired remotes.

2.2.6 SOS Function Setting

2.2.6.1 SOS function is off in default mode. Notification: SOS function will recognize the installation status of alarm. Please do not change direction after installation, or this function will be invalid.

2.2.6.2 Turn on SOS: Press and hold [] button, when LED indicator goes off and display for a long pause then be bright, press [] button, the alarm will sound a beep, then 5 beeps, the function is on. If 2 long beeps, setting is failure. (keep the alarm still when setting)

2.2.6.3 Turn off SOS: press and hold [] button, when LED indicator goes off and display for a long pause then be bright, press [] button, then 2 long beeps will turn off the function. Next, press [] button to exit the setting. Power off the alarm will turn off SOS function too.

6

2.2.6.4 When the alarm is in disarm mode with SOS function on, tilt the vehicle at 45 degree angle, it will sound SOS tone automatically, straighten the vehicle will stop the sound.

2.2.7 Low Battery Indication

2.2.7.1 For alarm, please replace batteries in time if you hear "Du..Du" when arming/disarming.

2.2.7.2 For remote, please replace battery if you notice that the LED indicator goes dark or wireless range becomes shorter.

7