

Deluxe Duo Walking Frame - WA04020004



Thank you for deciding to purchase the Deluxe Duo Walking Frame from CareCo.

The Walking Frame is manufactured from the finest materials and components available. When used correctly it is designed to give many years of reliable trouble-free service.

Product Specifications	
Seat Height	18cm
Seat Depth	42cm
Seat Width	46cm
Product Weight	2.4kg
Max User Weight	120kg/18.5st

Custom Walker Adjustments

With your arm extended down, handle should be at wrist height. With your hands placed on the hand-grip, your elbow should be flexed 20-30°.

Warning:

- Do not push one side of the walker ahead and then other side without lifting the walker first.
- Do not use on stairs or escalators.

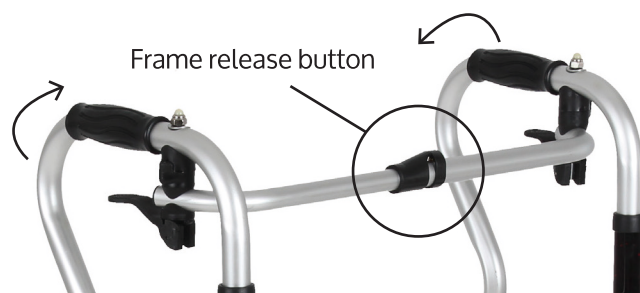
Caution:

Be aware of the following:

- Electrical cords in the way.
- Liquids on the floor.
- Throw rugs.
- Toys or debris.
- Furniture.
- Doors and door steps.
- Gaps in the floor.

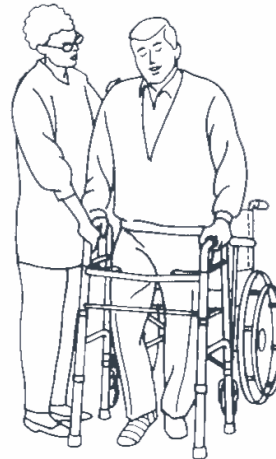
Folding the Walker

To fold the walker, press and twist the frame release button located on the upper support brace of the walker. Once this has been twisted and released, push both legs into the centre of the frame to fold the walker for storage and transport.



Operation And Use Of The Product

Put your feet placed in the middle of the hind legs of the walker frame, determining wheelchair wheels have locked, by pressing the wheelchair armrest to lift your body and then move right to the walker frame. (If the left leg or foot injury, then the first left and then move right). Lift the walker and place it comfortably in front fo your body, determine the four legs are stationary ground. Then carefully move forward.



Step 1

To put your feet parallel to the middle of the hind legs of the walker.



Step 2

Lift the walker and place it comfortably in front of your body, to determine four legs are stationary ground.



Step 3

Carefully move forward, one step and a time.



Warranty

Your CareCo branded product is under warranty to be free from defects in material and workmanship for one year from date of receipt. This warranty expresses our confidence in the workmanship and materials used for our products.

In the event of a defect covered by this warranty, CareCo will, at our discretion, replace the product or supply parts to remedy. This warranty does not cover device failure due to owner misuse or negligence, or due to normal wear and tear. The warranty does not extend to non-durable parts. If you have any queries please contact CareCo.

The manufacturer reserves the right to alter without notice any weights, measurements or other technical data shown in this manual. All figures, measurements and capacities shown in this manual are approximate and do not constitute specifications.